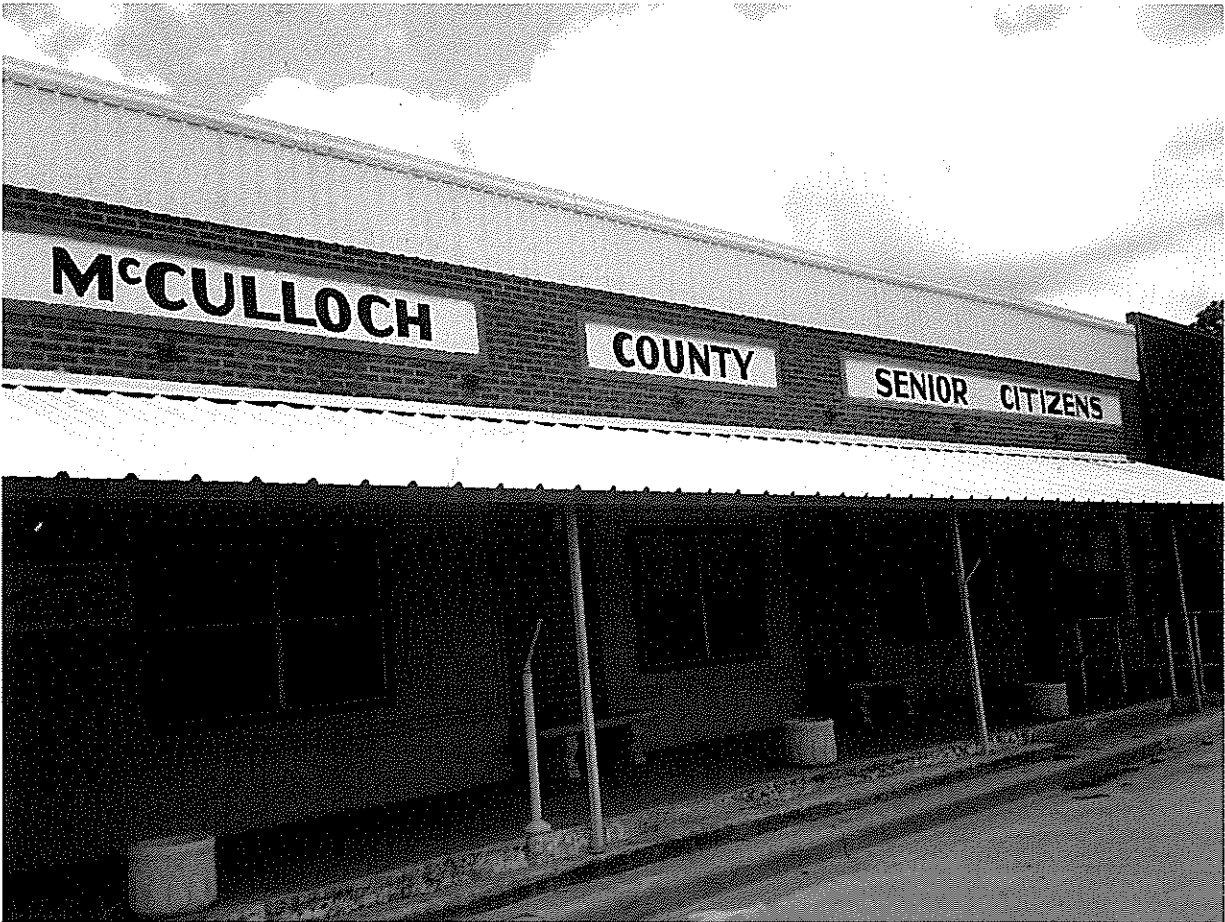


July 2021



Chat & Chew



HAPPY BIRTHDAY!

4...Louis Crawford

8...Linda Conn

11...Loeta Wise

12...Fay Lawler

28...Margie Chaney

30...Lindell Smith

Sudoku #6

			4				1	
	5					4		
1			8				7	
		8		7		2		
2								8
		6		9		1		
	9				5			2
		1					5	
	7				9			

*Binary adf:
Possessing the ability to have friends of both sexes.*

© 2013 KrazyDad.com

scratch area

ACROSS

- 1) Spanish houses
- 6) No Westminster contender
- 10) Spheres
- 14) Irish actor Milo
- 15) Lot of rows to hoe?
- 16) Dry tobacco leaves, e.g.
- 17) Sovereign time period
- 18) ___ Bator, Mongolia
- 19) It's uplifting to a skier
- 20) Street magician of note
- 23) One that serves the queen
- 24) Acting Mineo
- 25) Showing effortless grace
- 27) "7 Faces of Dr. ___"
- 30) It can be more, proverbially
- 33) Part of a runner's garb
- 36) Edison's middle name
- 38) Prefix for the opposed
- 40) In spite of the fact, to poets
- 41) Guys with white tigers, once
- 44) Famed missionary Junipero
- 45) Like any NBA center
- 46) Medical fluids
- 47) Commencements
- 49) Fall on ___ ears
- 51) One of Tennessee's twosomes
- 52) Gets better, as a wound
- 54) Yankee's crosstown rival
- 56) Socially conscious ad (abbr.)
- 58) Long-time Vegas showman
- 64) Eleven yards make two
- 66) Where white suits are the norm
- 67) Supreme Ross
- 68) "Matinee" or "Billy" follower
- 69) They're mined and refined
- 70) After, on the slopes
- 71) Bryn ___
- 72) A ___ formality
- 73) Pet-store purchase

DOWN

- 1) Firewood measure
- 2) Not on land
- 3) Homemade knife
- 4) Zeus' shield
- 5) Summer shoe
- 6) Badly claw
- 7) Bruins go there
- 8) Well-traveled path
- 9) Game that starts with love?
- 10) Start of the last qtr.?
- 11) Plant moved by an ant, in song
- 12) Hillside near Glasgow
- 13) Like the surface of Mercury
- 21) Make indistinct
- 22) Hawke of Hollywood
- 26) No ___ barred
- 27) Will Rogers' prop
- 28) Flying-saucer pilot
- 29) Outshine
- 31) Tizzy
- 32) Word before "fast" and after "home"
- 34) Rose protector
- 35) High-protein beans
- 37) Come to terms
- 39) Monty Python performer
- 42) Deadly
- 43) "... lion and goes out like ___"
- 48) Ski in a zigzag course
- 50) Like a system of serfs and lords
- 53) Type of drum
- 55) Foolish talk
- 56) Strait-laced
- 57) It's in the can, maybe
- 59) Good buddy?
- 60) In ___ (actually)
- 61) "Gone With the Wind" estate
- 62) Small bills
- 63) Subject of "A Beautiful Mind"
- 65) Camera type, for short

ITS MAGIC!

By Holly Copeland

1	2	3	4	5		6	7	8	9		10	11	12	13	
14						15					16				
17						18					19				
20					21					22		23			
			24					25			26				
27	28	29		30		31	32		33				34	35	
36			37		38			39		40					
41				42					43						
44						45					46				
47					48		49			50		51			
		52				53			54		55				
56	57			58				59	60				61	62	63
64			65		66						67				
68					69					70					
71						72					73				

JUNE

Find the words in the grid. When you are done, the unused letters in the grid will spell out a hidden message. Pick them out from left to right, top line to bottom line. Words can go horizontally, vertically and diagonally in all eight directions.

I F A N G N I Y A L P J U N E
N I G O H T C E O U L D T A L
K I R I T W N N O I T A C A V
O U E T L U D M O U N T A I N
P R M A J G N I N E D R A G O
R N M R B A B F A M I L Y F F
E O U B S W I M M I N G A L R
C I S E G Y O T W B A T O E I
R T A L S N R U T A H E N I E
E A T E I E I N T E L I S P N
A U V C S E N K R D H K I T D
T D E E D R F S I S O C I O S
I A D M A N C L N H N O E N N
O R R F G T M U A I N C R H G
N G J R K R S V C G T Y T S P

By Evelyn Johnson - www.qets.com

Celebration

Desert

Family

Fathers

Flag

Friends

Gardening

Graduation

Hiking

June

Mountain

Outdoors

Picnic

Playing

Recreation

Sea

Summer

Sunshine

Swimming

Vacation

Walking

JUNE

HIDDEN QUOTATION

BY

Bernard Williams



COPY AUTHORIZATION BY THE AUTHOR

You may make unlimited copies of this original large print word search puzzle for personal, senior center, medical facility, or classroom use. Visit www.qets.com for more large print puzzles.

Evelyn Johnson

Sudoku #6

3	2	9	4	5	7	8	1	6
8	5	7	9	6	1	4	2	3
1	6	4	8	3	2	5	7	9
9	1	8	5	7	3	2	6	4
2	3	5	1	4	6	7	9	8
7	4	6	2	9	8	1	3	5
4	9	3	7	1	5	6	8	2
6	8	1	3	2	4	9	5	7
5	7	2	6	8	9	3	4	1

ANNOUNCEMENT !!!

Bingo @ 9:15 on Wednesdays

Advisory Board meets every
2nd Wednesday of the month @ 9:00 for a brief meeting.
New members are needed.

Senior Center is seeking desk volunteers
to help from 10:30am-12:00pm.

McCulloch County Senior Citizens Menu
 214 W. Lockhart Brady, Texas 76825
 325-597-2946
 July-2021

MONDAY	TUESDAY	WEDNESDAY	THURSDAY	FRIDAY
 138153794			1 BBQ Brisket Hash browns Turnip Greens Cornbread Fluffy Pineapple Pie	2 Salmon Patty Baby Lima Beans Coleslaw Cornbread Tropical Fruit
 CLOSED	6 Polish Sausage Red Cabbage w/Sweet & Sour Sauce German Potato Salad Wheat Roll Black Forest Parfait	7 Chicken Spaghetti Carrots Zucchini Wheat Roll Banana/Vanilla Pudding	8 Smothered Steak Mashed Potatoes Mixed Greens Wheat Roll Peach Shortcake	9 Pollock Wedge/Lemon Slice Lima Beans Cole Slaw w/ Raisins Cornbread Lemon Cookie
12 Pork Chops Turnip Greens Black-eyed Peas Cornbread Applesauce	13 Chicken Tetrazzini Italian Vegetables Tossed Salad/Italian Dressing Garlic Bread Oatmeal Cookie	14 Beef Pot Roast Roast Potatoes Roast Carrots & Peppers Wheat Roll Peach Cobbler	15 Taco Pie w/Salad Pinto Beans Chuckwagon Corn Tortilla Imit. Peanut Butter Cup	16 Tilapia/Lemon Slice Mustard Greens Marinated Cucumber & Onions Cornbread Strawberry Shortcake
19 Chopped BBQ w/Sauce Pinto Beans Grandma's Potato Salad Whole Wheat Bun Mandarin Oranges	20 Chicken Fajitas Fajita Vegetables Chuckwagon Corn Spanish Rice/Flour Tortilla Fruit Cocktail	21 Beef Salisbury Stk/Gravy Mashed Potatoes Cauliflower/Broccoli Wheat Roll Apricots	22 Sweet & Sour Chicken Long Grain Rice/Sugar Snap Peas Stir Fry Vegetables Wheat Roll Lazy Cake	23 Polish Sausage Red Cabbage w/Sweet & Sour Sauce German Potato Salad Wheat Roll Black Forest Parfait
26 Beef Goulash Navy Beans Broccoli Wheat Bread Oatmeal Raisin Cookie	27 Rigatoni w/ Meat Sauce Seasoned Lima Beans Tossed Salad w/ Dressing Garlic Bread Mandarin Oranges w/ Whipped Topping	28 Creamy Mushroom Steak Mashed Potatoes Peas & Carrots Wheat Roll Emerald Pears	29 Crispy Chicken on Bun Tomato & Lettuce Potato Wedges Carrot & Raisin Salad Fruit Cocktail	30 Homemade Turkey Pot Pie Seasoned Corn Tossed Salad w/Dressing Whole Wheat Roll Ambrosia

2% Milk and Tea served daily

All participants below 60 or without Client Intake are required to pay \$7.68 per meal.
 Please call by 9:00 am if you plan to eat with us and have not signed up. Sunset Center 597-2946 Helping Hands 597-2646